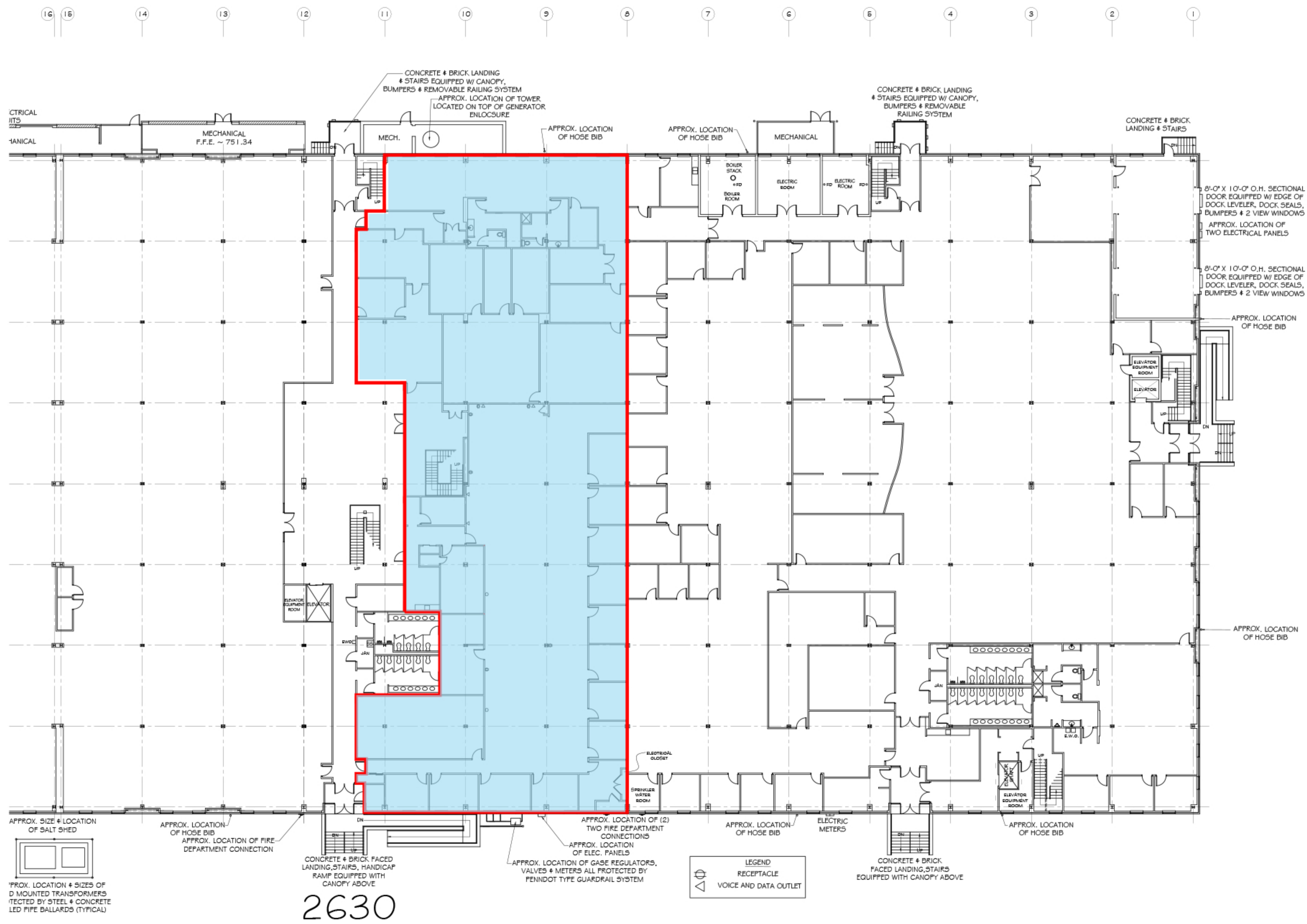


CONSTRUCTION NORTH



2630

 AVAILABLE SPACE

APPROX. SIZE & LOCATION OF SALT SHED

APPROX. LOCATION & SIZES OF D MOUNTED TRANSFORMERS PROTECTED BY STEEL & CONCRETE LED PIPE BALLARDS (TYPICAL)

APPROX. LOCATION OF HOSE BIB

APPROX. LOCATION OF FIRE DEPARTMENT CONNECTION

CONCRETE & BRICK FACED LANDING, STAIRS, HANDICAP RAMP EQUIPPED WITH CANOPY ABOVE

APPROX. LOCATION OF (2) TWO FIRE DEPARTMENT CONNECTIONS

APPROX. LOCATION OF ELEC. PANELS

APPROX. LOCATION OF GASE REGULATORS, VALVES & METERS ALL PROTECTED BY PENNDOT TYPE GUARDRAIL SYSTEM

LEGEND

⊖ RECEPTACLE

◁ VOICE AND DATA OUTLET

CONCRETE & BRICK FACED LANDING, STAIRS EQUIPPED WITH CANOPY ABOVE

8'-0" X 10'-0" O.H. SECTIONAL DOOR EQUIPPED W/ EDGE OF DOCK, LEVELER, DOCK SEALS, BUMPER & 2 VIEW WINDOWS

APPROX. LOCATION OF TWO ELECTRICAL PANELS

8'-0" X 10'-0" O.H. SECTIONAL DOOR EQUIPPED W/ EDGE OF DOCK, LEVELER, DOCK SEALS, BUMPER & 2 VIEW WINDOWS

APPROX. LOCATION OF HOSE BIB

APPROX. LOCATION OF HOSE BIB

REV.	DESCRIPTION	MADE	CHKD.
E			
D	ADDED ADD'L VACANT SPACE	PGR 5-8-19	
C	ADDED RED OUTLINE TO NEW AREA	TMM 10-11-17	
B	ADDED BLUE HATCH PER DIND DEPAULO	C.J.P. 5-23-17	

the Buncher company

1300 Penn Avenue, Suite 300
Pittsburgh, PA 15222

LOCATION:
26 ~ 28TH STREETS & LIBERTY AVE.
CITY OF PITTSBURGH, PA ~ 2ND & 6TH WARDS

LIBERTY COMMONS FIRST FLOOR VACANT SPACE				
SCALE	DRAWN	CHKD.	DRAWING NUMBER	REV.
1/8" = 1'-0"	G.J.P.		LCOM-001-VAC-A-9	D
DATE	11-18-16			