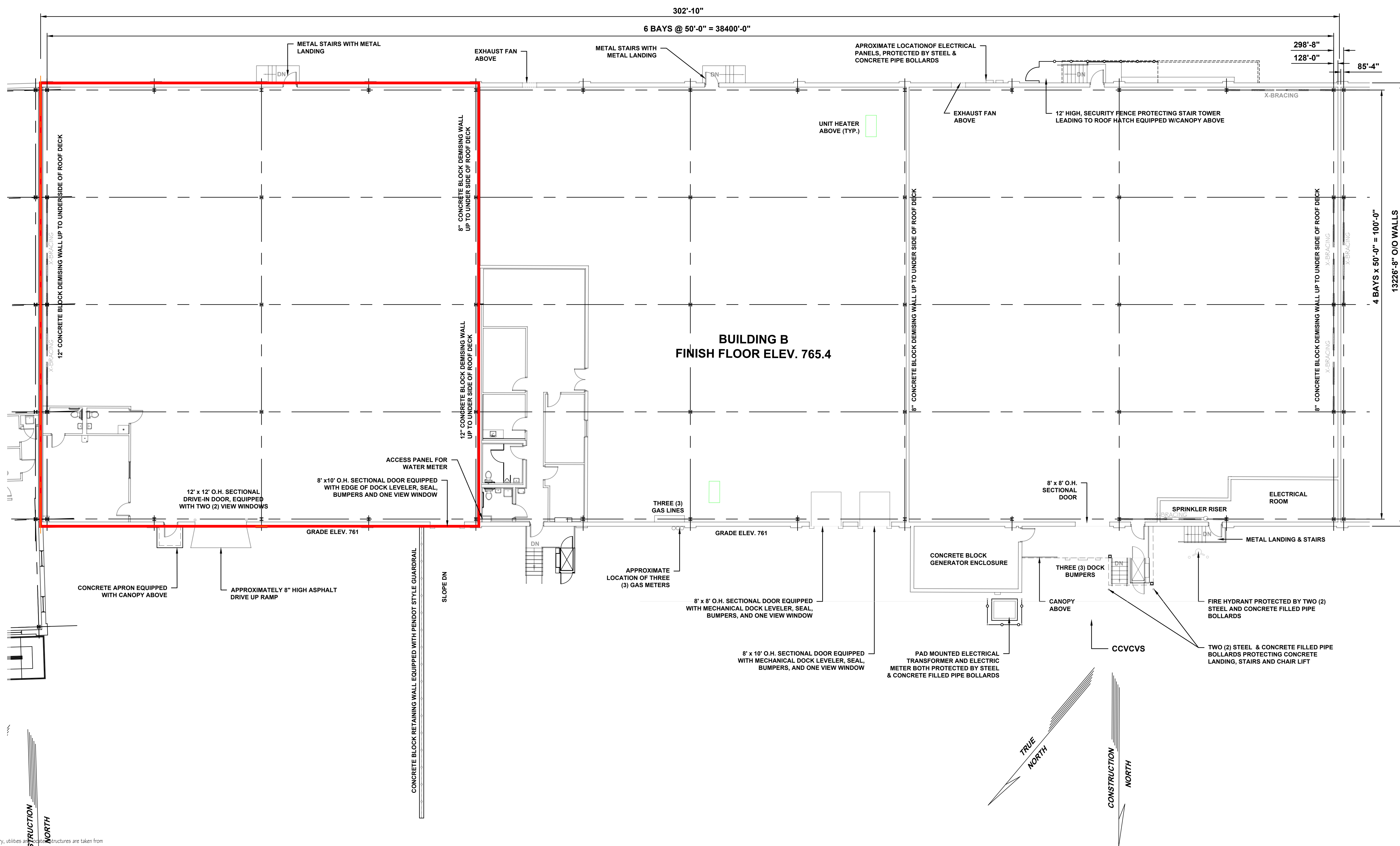


27 26 25 24 23 22 21 20 19 18 17 16 15 14 13



**BUILDING B
FINISH FLOOR ELEV. 765.4**

NOTE:
1.) The conditions shown on this plan including boundary, utilities and structures are taken from the following drawings:

 PLAN NAME: Strip Commerce Center—Building B—Ground Floor Plan
 PREPARED BY: Projec, Inc./Carl O. Schwarz
 DWG#: A-6
 DATED: June 1, 1994

 PLAN NAME: Strip Commerce Center—Building B—Ground Floor Plan for FPG Glass Div./Children's Hospital
 PREPARED BY: Projec, Inc./Carl O. Schwarz
 DWG#: A-40
 DATED: August 11, 1994

 PLAN NAME: Strip Commerce Center—Building B—Ground Floor Plan—Proposed Warehouse & Office for MCI
 PREPARED BY: Projec, Inc./Carl O. Schwarz
 DWG#: A-42
 DATED: January 6, 1995

REV.	DESCRIPTION	MADE	CHKD.
E	Updated Overall Floor Plan Per Existing Conditions.	A.M.B. 7/16/2009	
D	Updated The Office Area In Building B Per DRS Architects, Inc Drawing Number FP-1 Fire Protection Floor Plan Dated 7/14/2006	A.M.B. 9/15/2006	
C	Updated The Landing & Stairs Between Column Lines 21 & 22 Per Field Visit	A.M.B. 5/1/2006	
B	Updated Per Field Visit	A.M.B. 8/2/2005	

the Buncher company
 1300 Penn Avenue, Suite 300
 Pittsburgh, PA 15222

**LOCATION: STRIP COMMERCE CENTER
CITY OF PITTSBURGH, PA
6TH WARD**

BUILDING B WAREHOUSE FLOOR PLAN				
SCALE	DRAWN	CHKD.	DRAWING NUMBER	REV.
3/32" = 1'-0"	S.G.		SCC-BLDGB-A-1	E
DATES	3/19/2004			