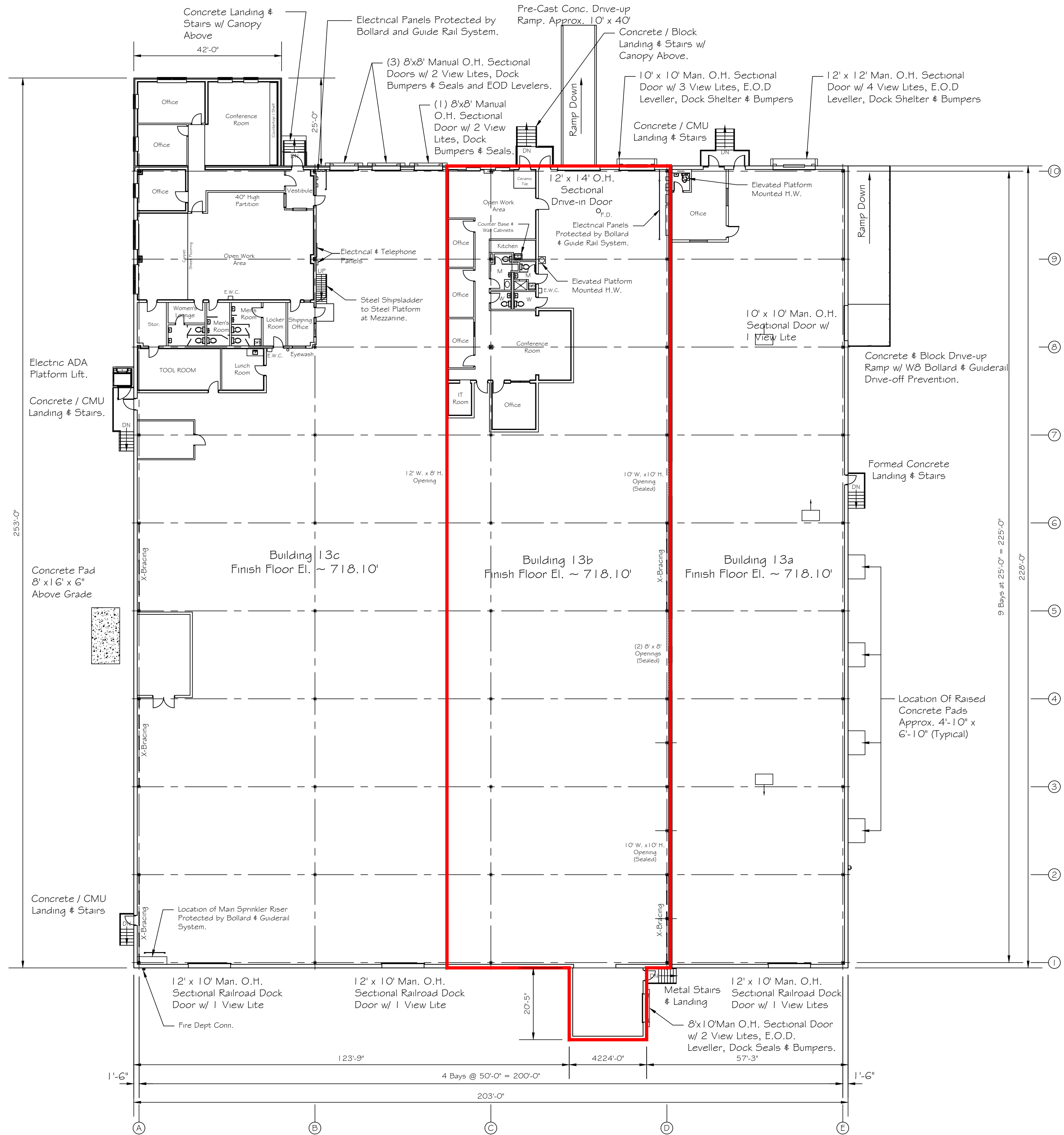


MEZZANINE FLOOR PLAN



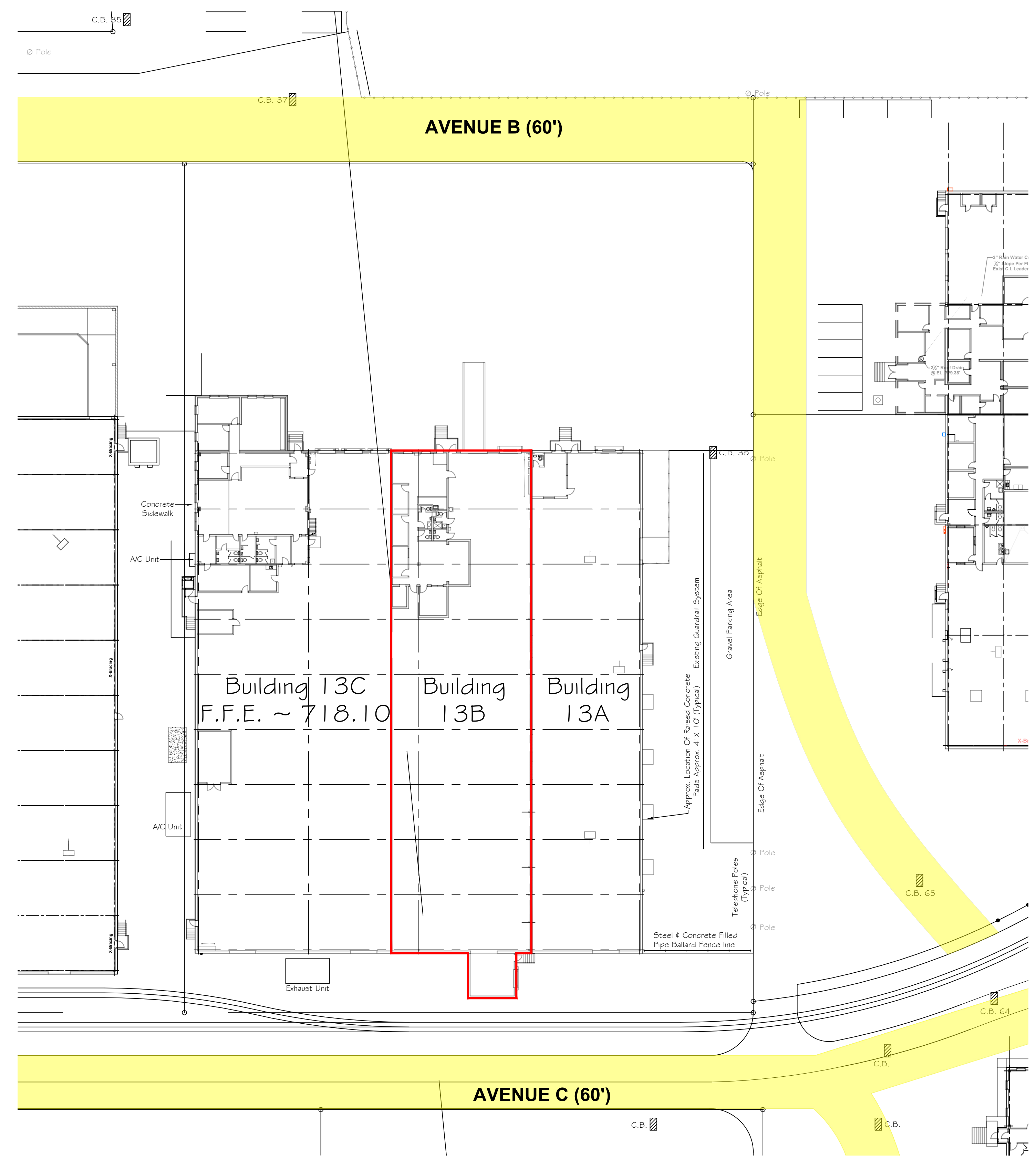
FIRST FLOOR PLAN

REV.	DESCRIPTION	MADE	CHKD.	REV.	DESCRIPTION	MADE	CHKD.	REV.	DESCRIPTION	MADE	CHKD.
Q	Updated The Overall Plan Per The Existing Conditions.	C.J.P.		J	Updated The Overall Floor Plan Per Existing Conditions	A.M.B.		E	Revised 13C Per Existing Drawings	A.M.B.	
N	Updated The Finish Floor Elevations Per Engineers Certificate	A.M.B.		H	Updated The Overall Floor Plan Per Existing Conditions	A.M.B.		D	Revised 13A Per Site Visit.	S.L.S.	
M	Updated The Overall Plan Per The Existing Conditions.	A.M.B.		G	Updated The Overall Floor Plan Per Field Visit.	A.M.B.		C	Building B Drive Up Ramp Removed	C.A.S.	
L	Updated Building 13B Per Existing Conditions.	A.M.B.		F	Updated The Overall Floor Plan Per Existing Conditions	A.M.B.		B	Drawing Number Was FP-1	C.A.S.	
K	Revised The General Notes Located Within Building 13A	A.M.B.									



LOCATION: BOROUGH OF LEETSDALE ALLEGHENY COUNTY, PA

LEETSDALE COMMERCE PARK BUILDING 13 WAREHOUSE & OFFICE FLOOR PLAN				
SCALE	DRAWN	CHKD.	DRAWING NUMBER	REV.
1/16" = 1'-0"	C.A.S.		LTSD-013-A-02	0
DATES	7/24/2000			



D			
C			
B			
A			
REV.	DESCRIPTION	MADE	CHKD.

1300 Penn Avenue, Suite 300  
 Pittsburgh, PA 15222

LOCATION:  
**BUNCHER COMMERCE CENTER**  
**LEETSDALE, PENNSYLVANIA**

BUILDING #13 SITE PLAN				
SCALE	DRAWN	CHKD.	DRAWING NUMBER	REV.
1"=30'	PGR		LTSD-013-C-01	-
DATES	3-8-18			