

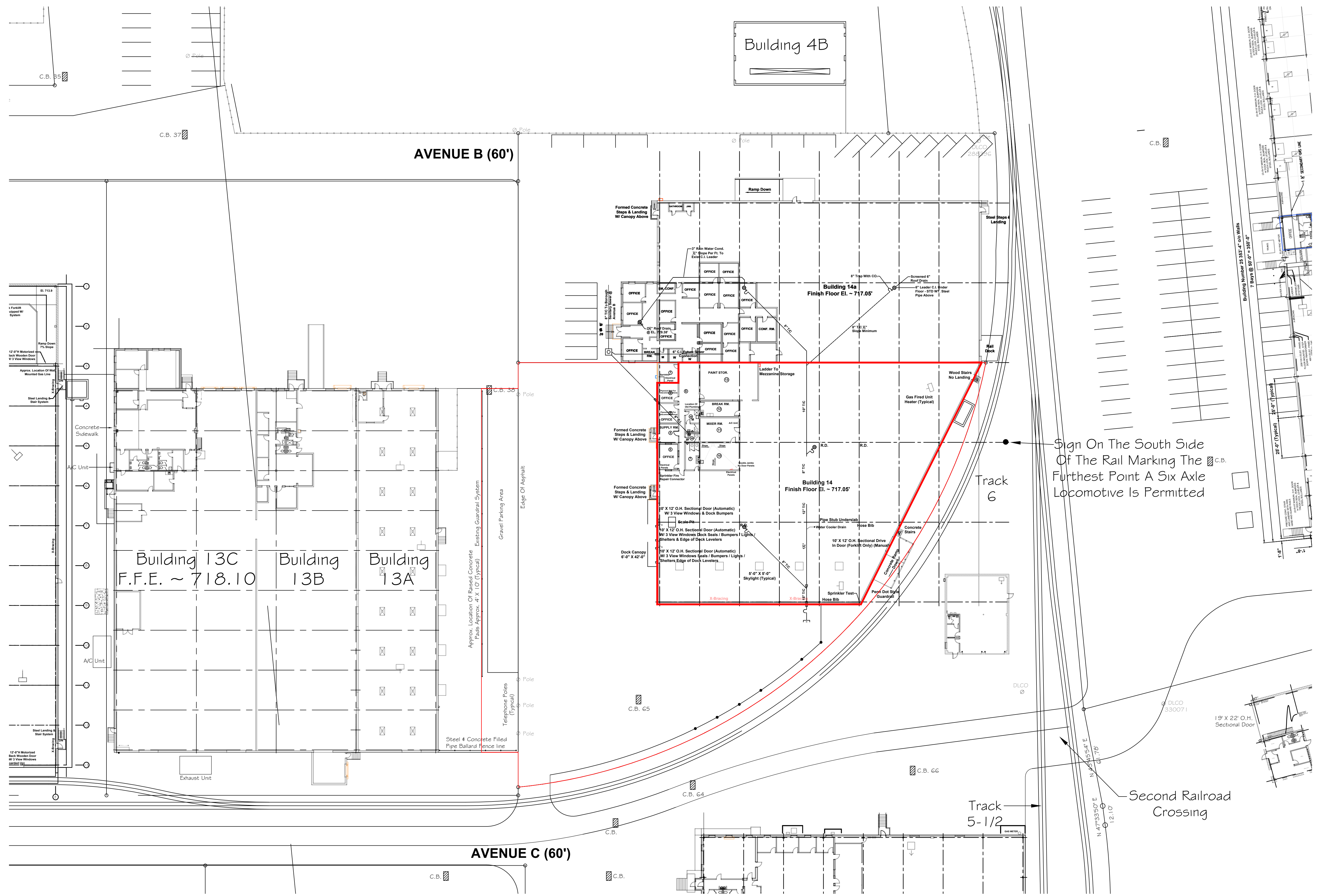
D			
C			
B			
A			
REV.	DESCRIPTION	MADE	CHKD.



5600 Forward Avenue
Pittsburgh, Pa. 15217

LOCATION: BOROUGHS OF LEETSDALE
ALLEGHENY COUNTY, PA

FLOOR PLAN BUILDING 14				
SCALE	DRAWN	CHKD.	DRAWING NUMBER	REV.
1/8" = 1'-0"	MD		LTSD-014-A-01	
DATES	01/12/21			



Sign On The South Side Of The Rail Marking The Furthest Point A Six Axle Locomotive Is Permitted

Second Railroad Crossing

D				
C				
B				
A				
REV.	DESCRIPTION	MADE	CHKD.	



1300 Penn Avenue, Suite 300
Pittsburgh, PA 15222

LOCATION: BUNCHER COMMERCE CENTER
BUILDING 14A & 14B, AVENUE B
LEETSDALE, PENNSYLVANIA

**BUILDING #14B
SITE PLAN**

SCALE	DRAWN	CHKD.	DRAWING NUMBER	REV.
1"=30'	PGR		LTSDPROP-14B-C-1	-
DATES	2/10/22			