



STRATEGIC LOCATION

Jackson's Pointe is a newly developed park located in Butler County off the Evans City/SR 528 exit of I-79. This new and desirable park is perfect for office, retail, distribution, flex, technology, and light manufacturing with direct access to Rt. 19/Perry Highway. Also located minutes from historical downtown Zelienople.

- ☑ Serviced by three (3) signalized intersections
- ☑ Average Daily Traffic (ADT) 13,000 along Route 19
- ☑ Fully established park
- ☑ All utilities



[For More Information or to Schedule a Tour](#)

One Waterfront Place, 1251 Waterfront Place, Suite 201, Pittsburgh, PA 15222

brgoetz@buncher.com • gbroujos@buncher.com • jddepaulo@buncher.com

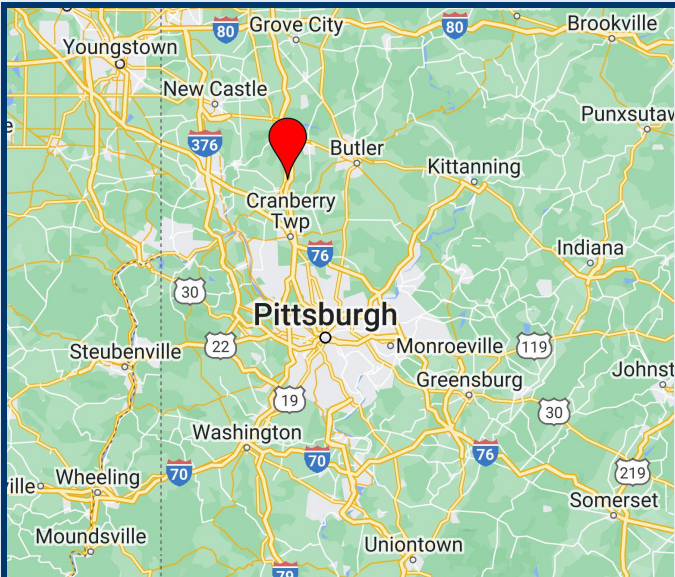
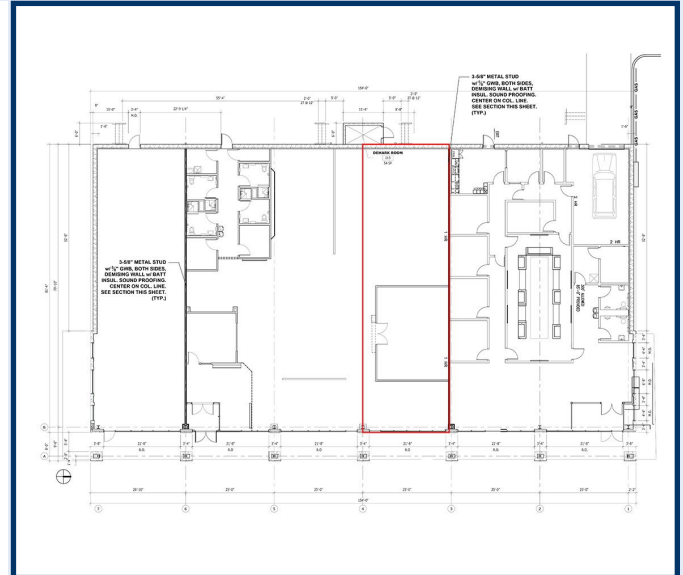
412.422.9900

Disclaimer:

No express representation or warranty is made nor is any to be implied as to the accuracy of the information furnished regarding the property thereof, and it is submitted subject to errors, omissions, or other conditions, prior lease, or withdrawal without notice.

PROPERTY HIGHLIGHTS

- ✔ Serviced by three (3) signalized intersections
- ✔ Zoned commercial corridor (cc)
- ✔ High visibility from all directions
- ✔ Average Daily Traffic (ADT) 13,000 along Route 19
- ✔ Class A inline retail
- ✔ Suitable for restaurant, retail, or retail office



LOCATION HIGHLIGHTS

- ✔ Directly off Evans City exit of I-79
- ✔ 10 minutes to PA Turnpike (PA-76)
- ✔ 30 minutes to Downtown Pittsburgh
- ✔ 5 minutes to Cranberry Township
- ✔ Located minutes from historical Downtown Zelenople

BUNCHER
COMPANY

Developing with a Purpose

For More Information or to Schedule a Tour

One Waterfront Place, 1251 Waterfront Place, Suite 201, Pittsburgh, PA 15222

brgoetz@buncher.com • gbroujos@buncher.com • jddepaulo@buncher.com

412.422.9900

NAIOP

SIOR