



STRATEGIC LOCATION

Liberty Technology Center combines an attractive environment with metropolitan amenities. It is ideal for office needs as well as showroom, research and development, computer, and service requirements.

- ✓ Class A office finishes tailored to tenant's requirements
- ✓ Situated in Pittsburgh's historic Strip District
- ✓ Fiber Connectivity
- ✓ 1.5 miles from the Central Business District



[For More Information or to Schedule a Tour](#)

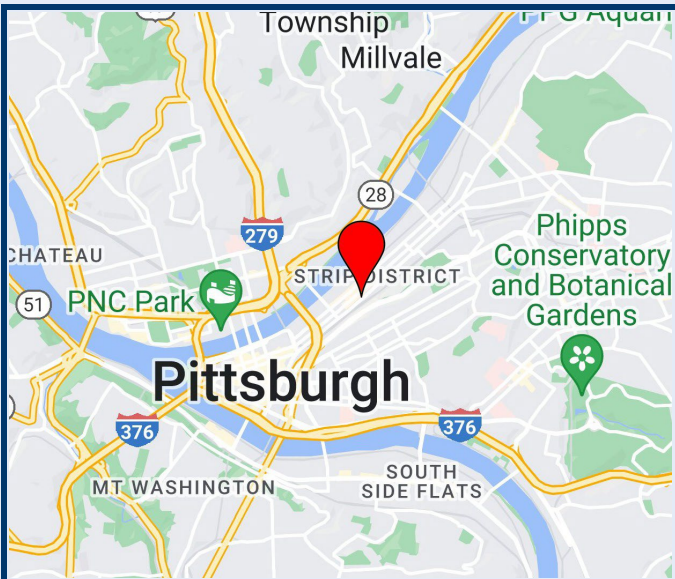
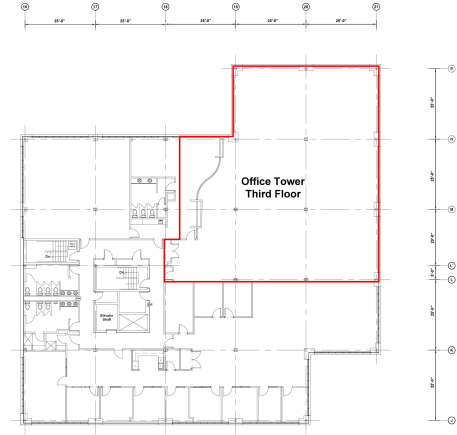
One Waterfront Place, 1251 Waterfront Place, Suite 201, Pittsburgh, PA 15222
brgoetz@buncher.com • gbroujos@buncher.com • jddepaulo@buncher.com
412.422.9900

Disclaimer:

No express representation or warranty is made nor is any to be implied as to the accuracy of the information furnished regarding the property thereof, and it is submitted subject to errors, omissions, or other conditions, prior lease, or withdrawal without notice.

PROPERTY HIGHLIGHTS

- ✓ Class A office finishes tailored to tenant's requirements
- ✓ Flexible leasing terms
- ✓ Efficient floor plates
- ✓ Fiber connectivity
- ✓ Percentage of free parking



LOCATION HIGHLIGHTS

- ✓ PRT system bus stop at entrance
- ✓ Adjacent to the Central Business District
- ✓ Close proximity to the recently opened Edge 1909 and The District riverfront apartments
- ✓ Only a few blocks to the Strip District's shopping and restaurants
- ✓ Close proximity to the 143-room Hampton Inn and Suites, AC Hotel, and Homewood Suites

BUNCHER
COMPANY

Developing with a Purpose

NAIOP

SIOR®

For More Information or to Schedule a Tour

One Waterfront Place, 1251 Waterfront Place, Suite 201, Pittsburgh, PA 15222

brgoetz@buncher.com • gbroujos@buncher.com • jddepaulo@buncher.com

412.422.9900