

ONE WATERFRONT PLACE

1251 Waterfront Place

For Lease

Prime location in Pittsburgh's
famed

STRIP DISTRICT

BUNCHER
COMPANY

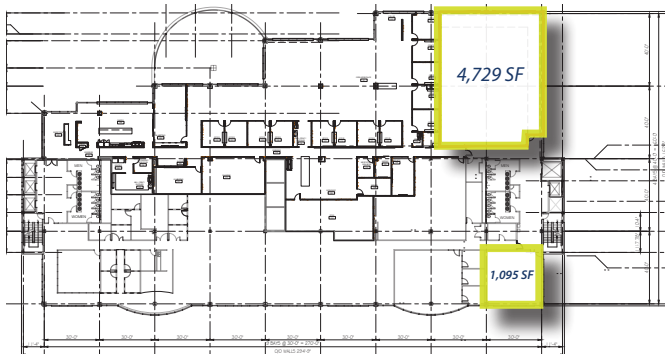


PROPERTY FEATURES

One Waterfront Place is strategically located adjacent to the Central Business District in Pittsburgh's Historic Strip District. Suites ranging from **1,095 - 16,088 SF**.

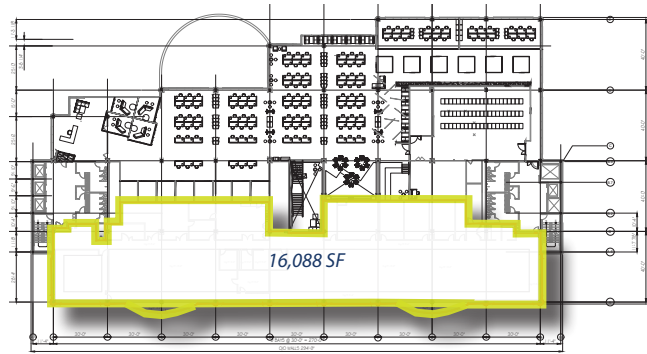
Second Floor

1,095 - 4,729 SF suites available



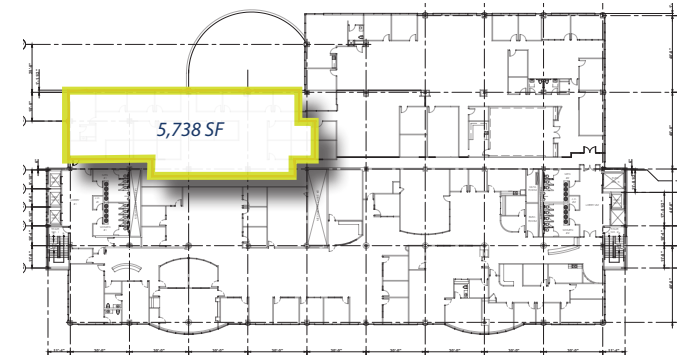
Third Floor

16,088 SF suite available



Fifth Floor

5,738 SF suite available



- Class A office finishes tailored to tenant's requirements
- Flexible lease terms
- Fiber connectivity
- Onsite cafeteria with outside patio area along riverfront
- Top floor with riverfront views
- Ample parking surrounding One Waterfront Place



Less than 10 minute walk
to
Central Business District



Less than 10 minute walk
to the center of the
Strip District



Easy access to I-376, I-279,
I-579, Route 65 and
Route 28



Smallman Street
Penn Avenue



ONE WATERFRONT
PLACE





CONTACT US

Gregg Broujos

gbroujos@buncher.com

Dino DePaulo

jddepaulo@buncher.com

1251 Waterfront Place, Suite 201

Pittsburgh, PA 15222

412.422.9900

Disclaimer:

No express representation or warranty is made nor is any to be implied as to the accuracy of the information furnished regarding the property thereof, and it is submitted subject to errors, omissions, or other conditions, prior lease, or withdrawal without notice.