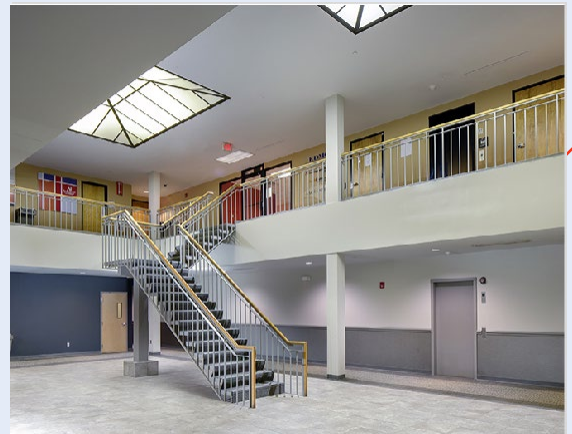




STRATEGIC LOCATION

Penn Liberty Plaza II is a modern business space especially well-suited for administrative offices, corporate support centers, and architectural and engineering offices.

- ✓ Class A office finishes tailored to tenant's requirements
- ✓ Situated close to downtown and the Strip District
- ✓ Insulated and tinted windows for energy efficiency
- ✓ Bike lane outside the front entrance with onsite bike storage



[For More Information or to Schedule a Tour](#)

One Waterfront Place, 1251 Waterfront Place, Suite 201, Pittsburgh, PA 15222

brgoetz@buncher.com • gbroujos@buncher.com • jddepaulo@buncher.com

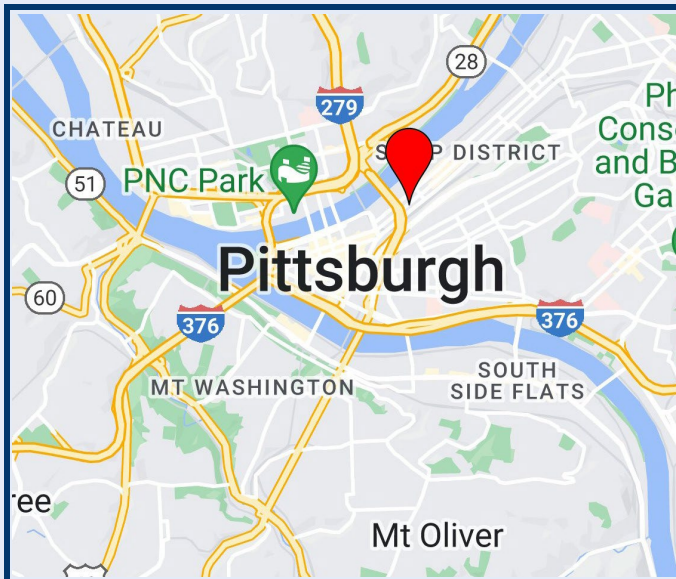
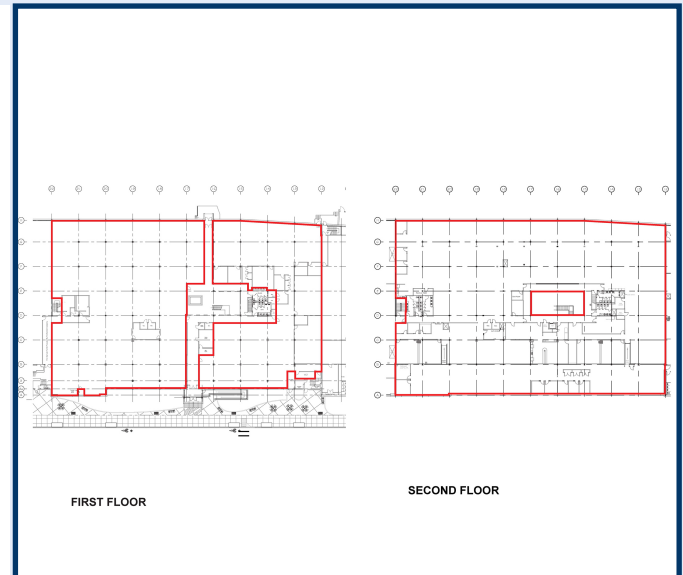
412.422.9900

Disclaimer:

No express representation or warranty is made nor is any to be implied as to the accuracy of the information furnished regarding the property thereof, and it is submitted subject to errors, omissions, or other conditions, prior lease, or withdrawal without notice.

PROPERTY HIGHLIGHTS

- ✓ Class A office finishes tailored to tenant's requirements
- ✓ Flexible leasing terms
- ✓ Fiber connectivity
- ✓ Insulated and tinted windows for energy efficiency
- ✓ Percentage of free parking



LOCATION HIGHLIGHTS

- ✓ (PRT) system with bus stops along Liberty Avenue
- ✓ Five-minute walk to the Central Business District
- ✓ Close proximity to the recently opened Edge 1909 and The District riverfront apartments
- ✓ Only a few blocks to the Strip District's shopping and restaurants
- ✓ Close proximity to the 143-room Hampton Inn and Suites, AC Hotel, and Homewood Suites

BUNCHER
COMPANY

Developing with a Purpose

For More Information or to Schedule a Tour

One Waterfront Place, 1251 Waterfront Place, Suite 201, Pittsburgh, PA 15222

brgoetz@buncher.com • gbroujos@buncher.com • jddepaulo@buncher.com

412.422.9900

NAIOP

