

Jackson's Pointe Lot 11



JACKSON'S POINTE - LOT 11
ZEHNER SCHOOL ROAD, ZELIENOPE, PA

Jackson's Pointe is a newly developed park located in Butler County off the Evans City / SR 528 exit of I-79. This new and desirable park provides for office, retail, distribution, flex, technology, and light manufacturing with direct access to Route 19/Perry Highway. Also located minutes from Cranberry Township and historical downtown Zelenople.

Available Acreage: 2.05 acres - 89,237 SF

- Pad ready site
- Serviced by a signalized intersection
- High visibility from all directions

**VACANT LAND &
BUILD-TO-SUIT
OPPORTUNITY**



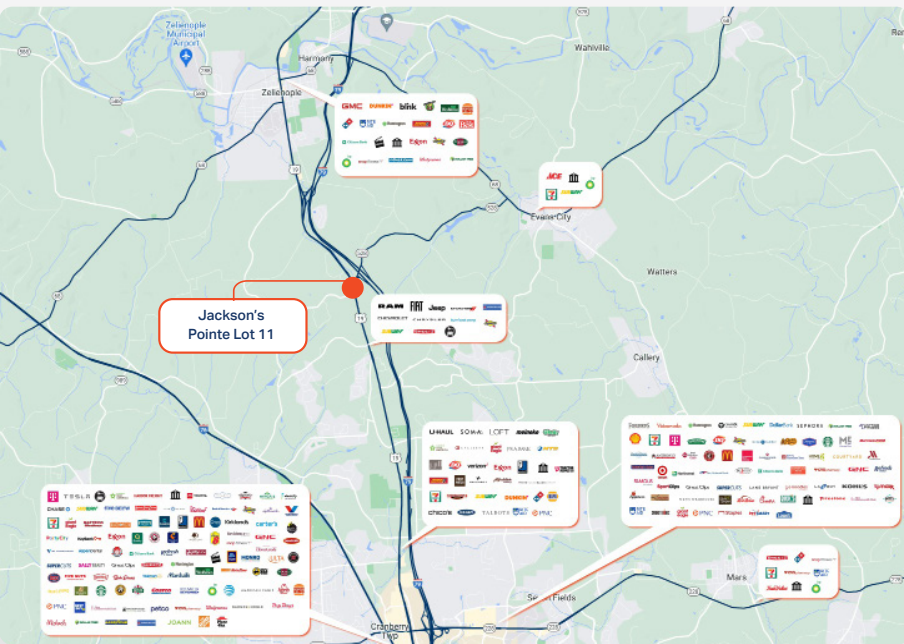
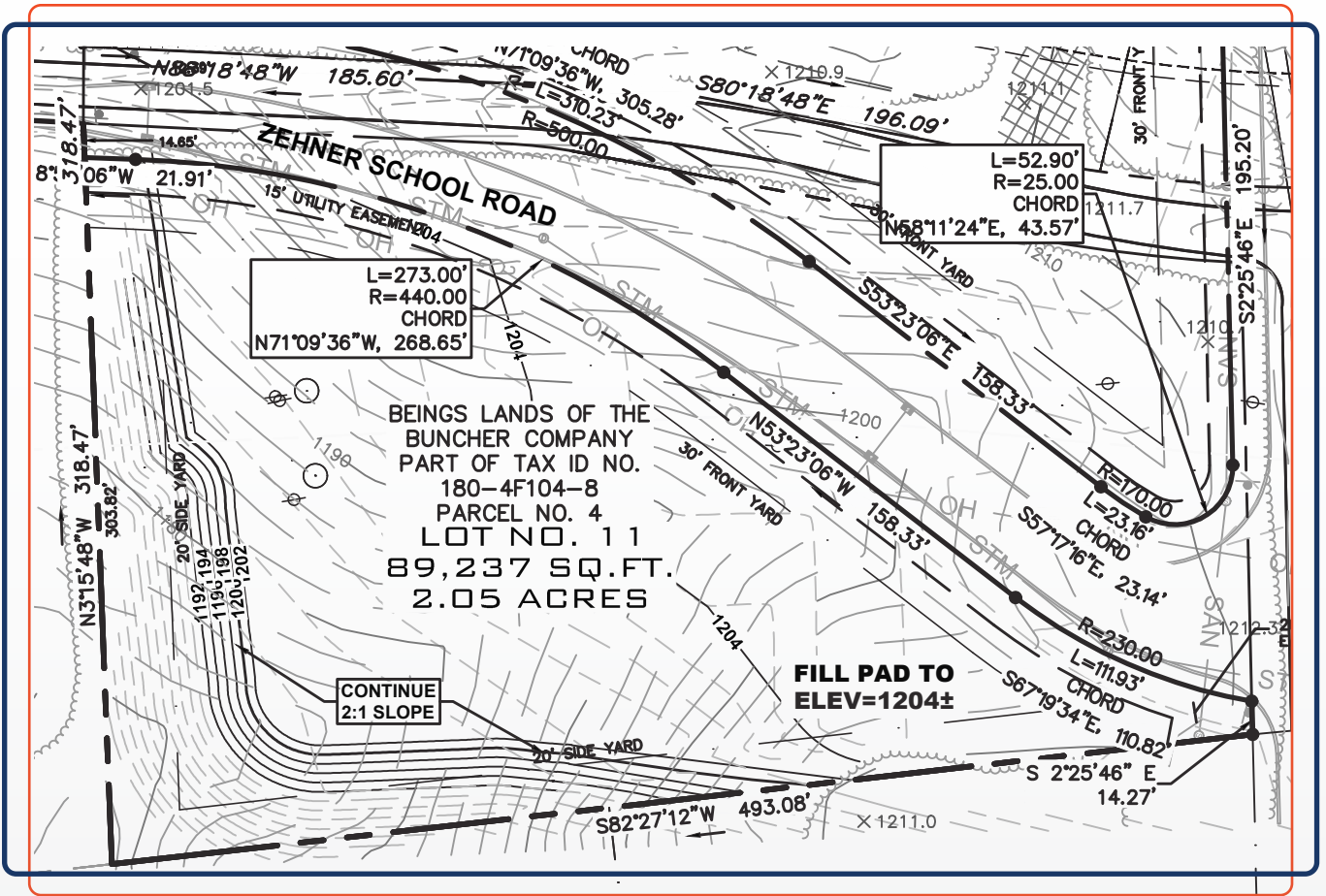
For More Information or to Schedule a Tour Please Contact:

Gregg Broujos
gbroujos@buncher.com

Michael Kutzer
mkutzer@buncher.com

One Waterfront Place
1251 Waterfront Place
Suite 201
Pittsburgh, PA 15222
412.422.9900

SITE PLAN | 2.05



LOCATION OVERVIEW

- Directly off Evans City exit of I-79
- 10 minutes to PA Turnpike (PA-76)
- 30 minutes to Downtown Pittsburgh
- 5 minutes to Cranberry Township
- Located minutes from historic Downtown Zelenople

20 MINUTE DRIVE-TIME DEMOGRAPHICS



Population:
118,192



Households:
46,133



Household Income:
\$171,596



Total Businesses:
4,710